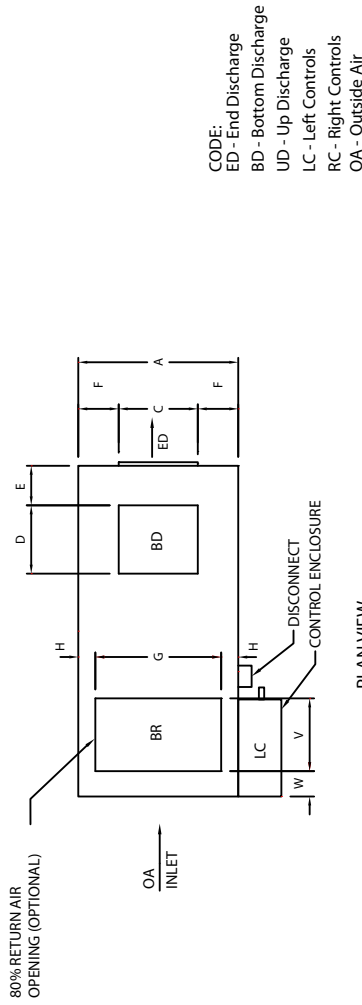


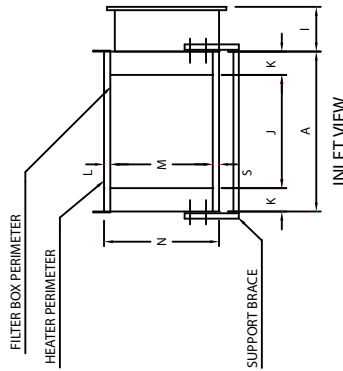
2 1

Approx. Shipping Wt (lbs)	
Heater Size	Heater Unit
XT-130	1650

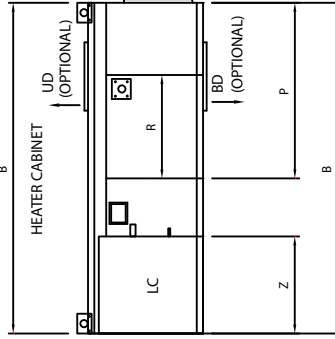


PLAN VIEW

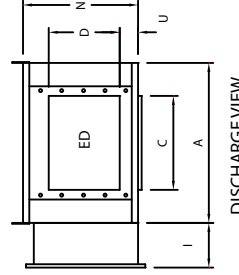
CODE:  
 ED - End Discharge  
 BD - Bottom Discharge  
 UD - Up Discharge  
 LC - Left Controls  
 RC - Right Controls  
 OA - Outside Air



INLET VIEW



SIDE VIEW



DISCHARGE VIEW

Inlet Hood Filter Information	
Cabinet Size	Filter Qty
XT-130	12 - 20 x 20 x 1
	Plus 4-20 x 10 x 1

CABINET DIMENSIONS

	A	B	C	D	E	F	G	H	I	J	K	L	M	N	P	R	S	U	V	W	X	Y	Z
INLET HOOD FILTER INFORMATION UNLESS OTHERWISE SPECIFIED	68.0	116	36.5	36.5	17.0	15.8	62.0	3.0	17.0	60.0	4.0	3.3	42.5	60.3	68.0	28.5	3.3	4.0	24	3.0	71.0	67.0	44.0
TOLEANCES AS NOTED UNLESS OTHERWISE SPECIFIED																							
ANGLE: 1"																							
MATERIAL/MAKE FROM:																							
FINISH:	XXXXXXXXXX																						
REV:	A																						
Drawn By:	Tom Burke																						
SCALE:	NTS																						

APPROVAL DRAWINGS

Approval drawings must be signed below and attached to Purchase Order before Unit is released to Production

Approved by: \_\_\_\_\_ Date \_\_\_\_\_  
 Company Name \_\_\_\_\_

All Information is subject to change without notice and should not be used for construction purposes unless certified. All products must be set-up, assembled, installed and used in accordance with all applicable instructions, the instruction manual provided as well as requirements of governmental authorities. This drawing in design and detail is the property of Roberts Gordon LLC and must not be used except in connection with its work. All the rights of design and invention are reserved by Roberts Gordon LLC

WEATHER-RITE LLC

PROJECT	
ADDRESS	
ENGINEER	
REV:	
DRAWING	XT-130 Base Cabinet

2 1