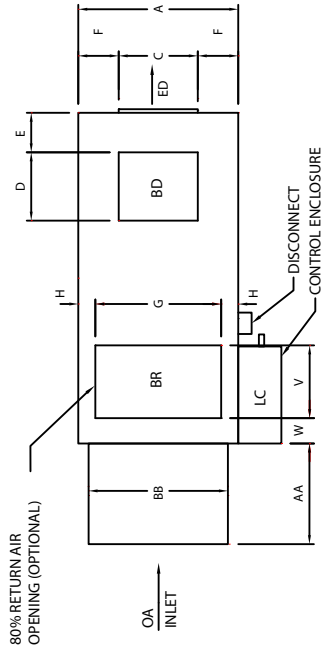
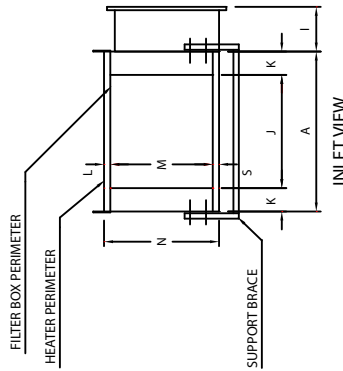


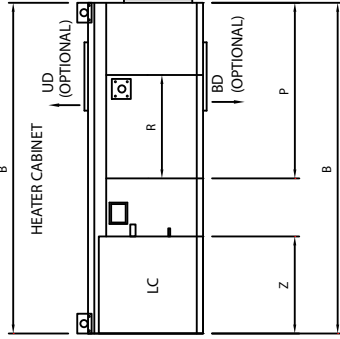
Approx. Shipping Wt. (lbs)	Heater Unit
XT-118	700



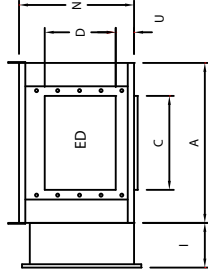
PLAN VIEW



INLET VIEW



SIDE VIEW



DISCHARGE VIEW

NOTE:
ALL DIMENSIONS AND WEIGHTS
ARE SUBJECT TO CHANGE
WITHOUT NOTICE AND SHOULD
NOT BE USED FOR CONSTRUCTION
UNLESS CERTIFIED.

CODE:
ED - End Discharge
BD - Bottom Discharge
UD - Up Discharge
LC - Left Controls
RC - Right Controls
OA - Outside Air

CABINET DIMENSIONS

Inlet Hood Filter Information	A	B	C	D	E	F	G	H	I	J	K	L	M	N	P	R	S	U	V	W	X	Y	Z
Cabinet Size	44.5	92	22	19	11	11.3	38	3.25	13	31.5	6.5	1.8	28.5	32	47.8	34.8	1.75	3	10	3	N/A	N/A	35
Filter Qty.	6 - 20 x 20 x 1																						

APPROVAL DRAWINGS

Approval drawings must be signed below and attached to Purchase Order before Unit is released to Production

Approved by: _____ Date _____
Company Name _____

All Information is subject to change without notice and should not be used for construction purposes unless certified. All products must be set-up, assembled, installed and used in accordance with all applicable instructions, the instruction manual provided as well as requirements of governmental authorities. This drawing in design and detail is the property of Roberts Gordon LLC and must not be used except in connection with its work. All the rights of design and invention are reserved by Roberts Gordon LLC

WEATHER-RITE LLC

PROJECT	
ADDRESS	
ENGINEER	
REV:	A
SCALE:	NTS
DRAWING	XT-118 Base Cabinet
	Horizontal

Drawn By: Tom Burke

Date _____