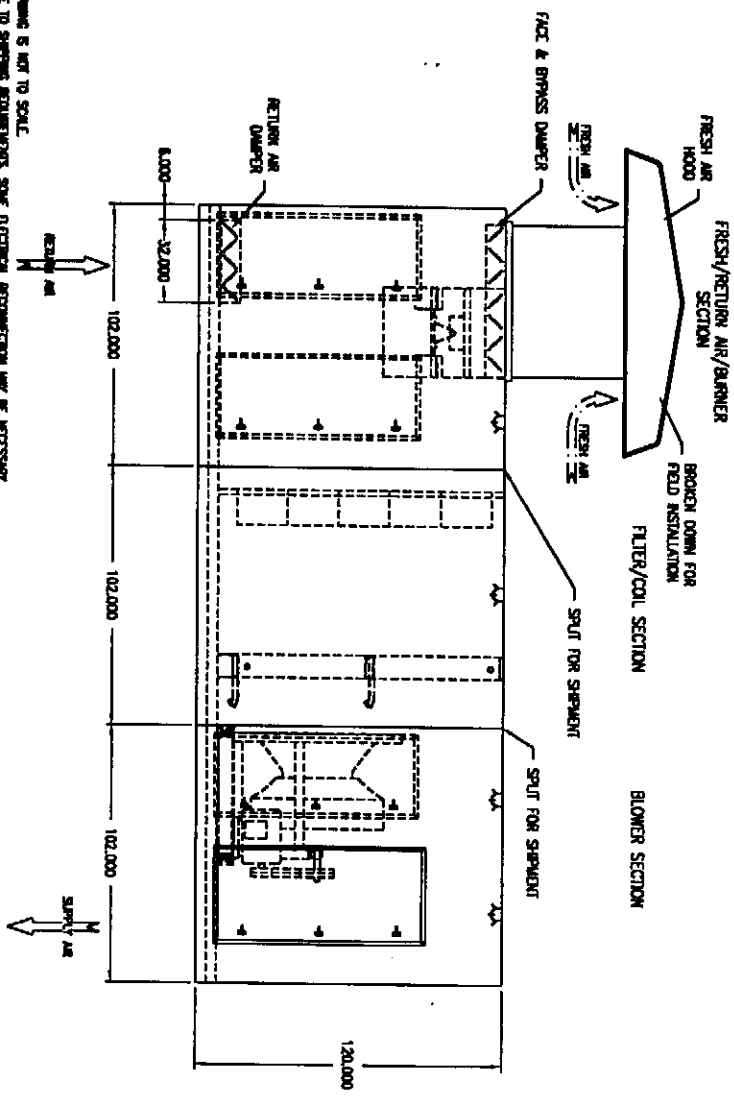
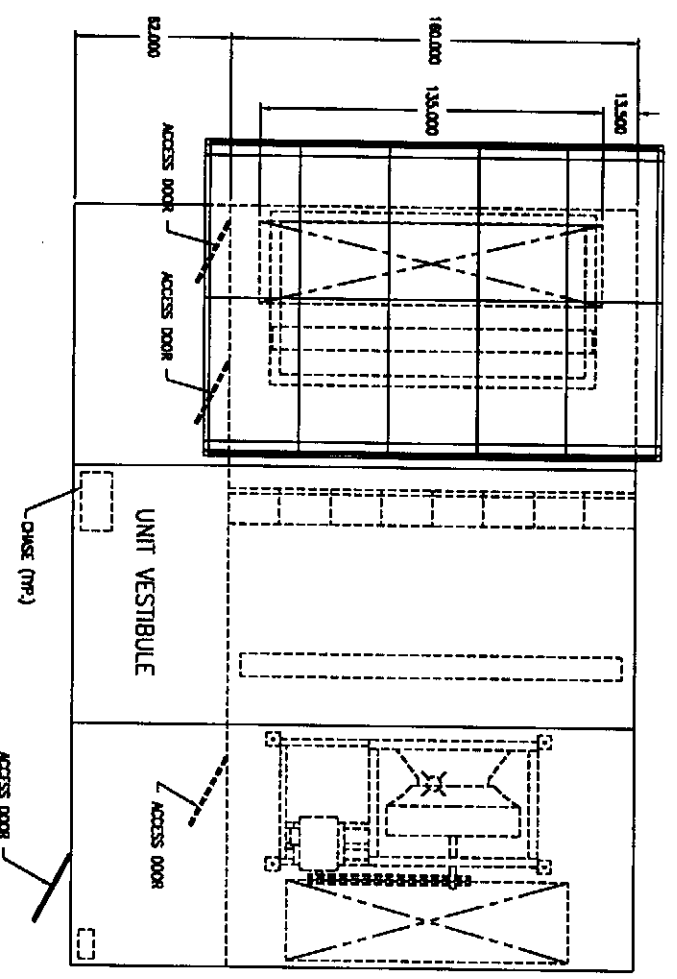


REV	DESCRIPTION	DATE	BY

MODEL
CAR 650
(SEE SUBMITTAL COVER SHEET FOR UNIT SPECIFICATIONS)

STANDARD FEATURES
FACTORY TESTED
16 GAUGE CASING
LUBRICATED BEARINGS W/ ZIRK FITTINGS
HEAT & RUST RESISTANT EXTERIOR FINISH



NOTES
1) DRAWING IS NOT TO SCALE
2) CALL TO SHIPPING REQUIREMENTS, SOME ELECTRICAL REWORKING MAY BE NECESSARY.

WEATHER-RITE
HEATING AND VENTILATION, INC.

DRAWN BY: SJA	DATE: 9/29/79	INSTALLATION DIMENSIONS	REVISION
C-690001-69		SHEET 1 OF 1	